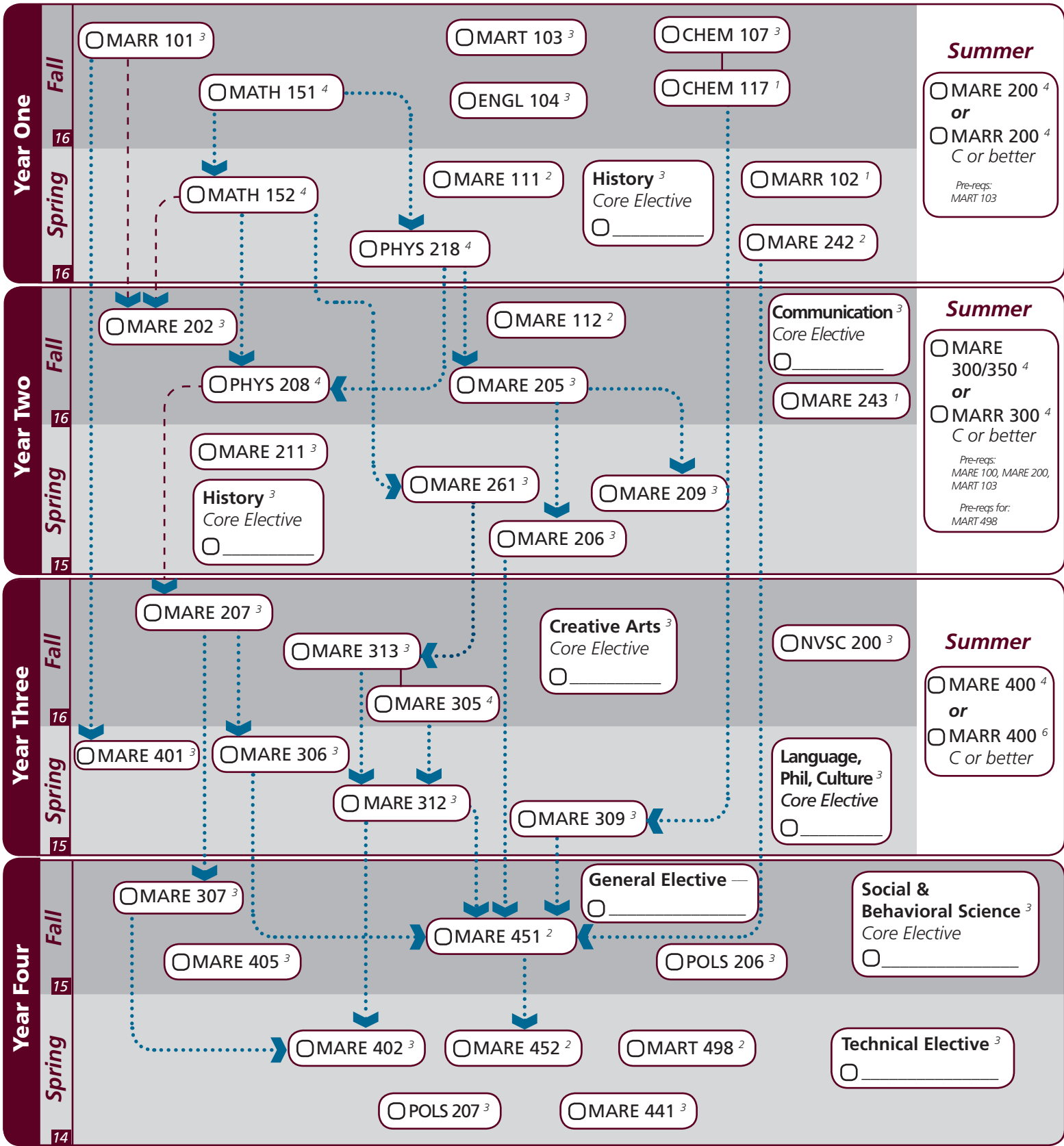


Notes: _____

- Foreign Language⁶
- CAEX 001 ICD³
- CAEX 004 ICD³



Key

- Pre-requisite
- - - - - Co-requisite
- ³ Course Credit Hrs
- 15** Semester Credit Hrs

I understand that the courses indicated on this sheet are required for my degree. If I change any of the course recommendations without consulting an academic advisor, it could affect my graduation timing, financial aid or could not count towards my degree.

Student Signature: _____ **Date:** _____

Academic Advisor Signature: _____ **Date:** _____

Major	<i>Texas A&M University at Galveston Course Options</i>					
Major Courses ⁹⁰	MARE 111 MARE 209 MARE 312 MARR 451	MARE 112 MARE 242 MARE 313 MARR 452	MARE 202 MARE 243 MARE 405 MART 103	MARE 205 MARE 261 MARE 441 MART 498	MARE 206 MARE 305 MARR 101 NVSC 200	MARE 207 MARE 309 MARR 102
Summer Cruises ¹²⁻¹⁸	MARE 200 or MARR 200		MARE 300/350 or MARR 300		MARE 400 or MARR 400	
Technical Electives ³	Technical electives may be any course with the following prefixes: MARE, MARR, MASE, OCEN, CVEN, MATH, PHYS, MARS, or OCNB at the 300 or 400 level in consultation with the student's advisor.					
A cumulative 2.25 GPR must be achieved on all major requirement courses						

Core	<i>Texas A&M University at Galveston Course Options</i>					
Communication ⁶	<i>Required:</i>	ENGL 104				
	<i>Select 1:</i>	COMM 203	ENGL 203	ENGL 210		
Mathematics ⁸ <i>All courses required</i>	MATH 151	MATH 152				
Life & Physical Sciences ¹² <i>All courses required</i>	CHEM 107	CHEM 117	PHYS 218	PHYS 208		
Language, Philosophy, Culture ³ <i>Select 1 course</i>	<i>ANTH 210</i> ENGL 334 HIST 242	ANTH 316 ENGL 335 PHIL 251	<i>ENGL 204</i> <i>ENGL 338</i> <i>SPAN 201</i>	<i>ENGL 222</i> <i>ENGL 374</i> <i>SPAN 202</i>	<i>ENGL 253</i> <i>GEOG 202</i>	ENGL 330 <i>GEOG 301</i>
Creative Arts ³ <i>Select 1 course</i>	<i>ARTS 150</i> <i>MUSC 226</i>	ENGL 212	<i>ENGL 251</i>	KINE 210	HISP 204	MAST 352
Social & Behavioral Science ³ <i>Select 1 course</i>	ANTH 202 PSYC 107	<i>COMM 365</i> <i>SOCI 205</i>	ECON 202	ECON 203	<i>GEOG 201</i>	<i>MARS 210</i>
American History ⁶ <i>Select 2 courses</i>	HIST 105	HIST 106	HIST 226	HIST 232		
Govt/Political Science ⁶ <i>Both courses required</i>	POLS 206	POLS 207				

University	<i>Texas A&M University at Galveston Course Options</i>					
Writing Intensive ⁶	MARE 405	MARE 452				
International and Cultural Diversity ⁶ <i>Select 2 courses</i> <small>Note that any blue marked major or core course will concurrently fulfill both requirements</small>	<i>ANTH 210</i> <i>ENGL 251</i> <i>GEOG 201</i> <i>MARE 400</i> <i>MAST 411</i> <i>SPAN 202</i>	<i>ARTS 150</i> <i>ENGL 253</i> <i>GEOG 202</i> <i>MARR 400</i> <i>MUSC 226</i>	<i>COMM 365</i> <i>ENGL 338</i> <i>GEOG 301</i> <i>MARS 210</i> <i>NAUT 400</i>	<i>ECON 452</i> <i>ENGL 339</i> <i>HIST 405</i> <i>MARS 280</i> <i>POLS 366</i>	<i>ENGL 204</i> <i>ENGL 374</i> <i>MARA 440</i> <i>MARS 432</i> <i>SOCI 205</i>	<i>ENGL 222</i> <i>FILM 251</i> <i>MARB 340</i> <i>MART 400</i> <i>SPAN 201</i>

Courses in this section can concurrently fulfill a Core or Major Requirement;
Two semesters of a single foreign language is required for students who did not complete the foreign language req in high school